

SFX FIBER LASER MARKING MACHINE

SFX-20GS/SFX-30GS/SFX-50GS



US Stock and Fast Delivery



24h Customer and Technical Support



Remote Assistance



2 Years Warranty



6 ADVANTAGE

Product Features Display



- Long Lifespan, Free Maintenance and Low Cost.
- Fast Marking Speed: 7000mm/s.
- High Repeat Precision: 0.002mm.
- High Rate of Electrical -Optical Conversion: 70%.
- Compatible with multiple file formats: Coreldraw, AutoCAD, Photoshop; PLT, PCX, DXF, BMP, etc. Directly Use SHX, TTF Fonts; Automatic Encoding, Printing Serial Number, Batch Number, Date, Barcode, QR Code, Automatic Jump Number, etc.
- English User Manual and Training Video Sending Together with the Machine.

PRODUCT PARAMETER

Technical Specifications



	SFX-20GS	SFX-30GS	SFX-50GS
Marking Area	110 x 110mm (4.3 x 4.3in) 150 x 150mm (5.9 x 5.9in) 175x 175mm (6.9 x 6.9in)		Optional
Maximum Material Thickness	300mm(11.8in)@110 x 110mm 250mm(9.8in)@150 x 150mm 206mm(8.1in)@175 x 175mm		
Laser Type	RAYCUS/IPG/JPT		Optional
Repetition Rate (Frequency)	20-60kHz@RAYCUS 1-600kHz@JPT LP	30-60kHz@RAYCUS 1-600kHz@JPT LP	50-100kHz@RAYCUS 1-600kHz@JPT LP
Pulse Duration	90-130ns@RAYCUS 200ns@JPT LP	90-130ns@RAYCUS 200ns@JPT LP	90-150ns@RAYCUS 200ns@JPT LP
Output Power Adjustment range	10%-100%		
Marking Speed	≤7m/s(275.6in/s)	≤7m/s(275.6in/s)	≤7m/s(275.6in/s)
Engraving Depth	≤0.2mm(0.008in)	≤0.4mm(0.016in)	≤1mm(0.024in)
Minimum Line Width	0.01mm(0.0004in)	Depends on the material	
Minimum Character	0.2mm(0.0008in)	Depends on the material	
Electrical Requirements	110V-240/50Hz-60Hz(According to local electricity supply).		
Power Consumption	500W	800W	1000W
Marking Interface	USB connection.Compatible with Windous XP/Vista/7/8/10.		
Communication Mode For Automation	TCP/IP,IO,RS232.		
Marking Content	barcodes,serial numbers,text,vector,and logos.		
Red Dot Pointer	Since the laser beam is incisible , the Red Dot Pointer allows you to have a visual reference for locating where the laser will fire .		
Contact us or fill out the form to learn more!			

PRODUCT PARAMETER



Laser Source: JPT LP E-20W/30W/50W

JPT LP series pulsed fiber lasers make use of master oscillator power amplifier (MOPA) configuration and show excellent laser performance as well as high level of temporal pulse shaping controllability. Compared with Q-switching technology, LP series has greater flexibility, wider frequency range, higher control precision and superior first pulse.

Lens: Jollystar & Wavelength

F-Thea Lenses feature multiple elements for the ultimate in image resolution. An air-spaced design and high efficiency AR coating guarantee excellent throughput and ability. An industry-standard M85 threading on all F-theta Lenses allows for easy mounting and simple retrofitting of OEM systems.



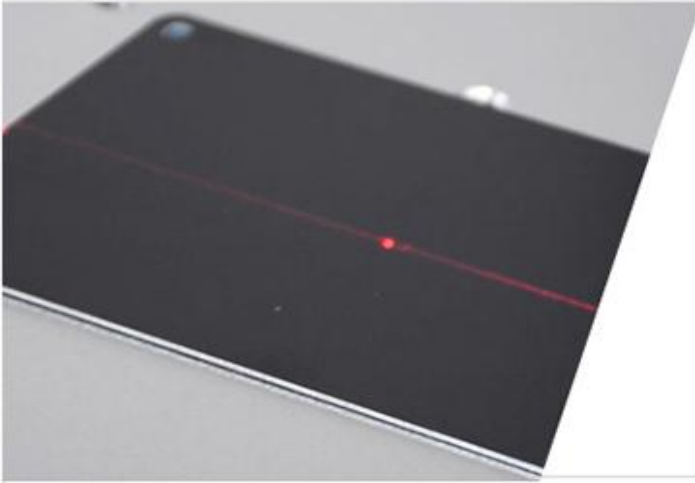
Control Board: JCZ-LMCV4

Stable and reliable provide various interfaces.

Galvo Scanner: Sino-Galvo

Good running stability, high positioning accuracy, fast marking speed, strong anti-interference ability.





Double Red Dot Focusing

Red guideline and red dot for easy focusing.

Work Bed

Aluminum Alloy open design with location hole, easy and accurate positioning.



Machine Interface: Aviation Plug and Socket

Industrial Standard Interface fits various boards, dust-proof and water-proof.

Rotary Axis (Optional)

D80 Rotary Axis with 57*76 Stepper Motor; Clamping Range: 2-70mm; Axis Height: 130mm(Elevation Angle:90°& Depression Angle:45°). D100/125/160mm please PM us.





2D Mini Workbench (Optional)

High rigidity aluminum alloy; X*Y Travel:
150*90mm; Locating Hole: M6; Hole Pitch:
25mm.

Applicable Industry

Hardware industry, wrenches, measuring tools, sanitary ware, stainless steel, medical equipment, luggage, gifts, table bottom, glasses frames, instruments.



PACKING LIST

1



1	1 x Fiber Laser Engraver	8	1 x Power Line
2	1 x Goggles	9	1 x Foot Switch
3	1 x Allen Wrench	10	M6 Positioning Screw (some)
4	1 x USB Drive	11	2 x Lock Bar
5	Installation and Use Video (In USB Drive)	12	1 x Workbench (Optional)
6	Software User Manual (In USB Drive)	13	1 x D80 Rotary Device (Optional)
7	1 x USB Line	14	1 x Lenovo Laptop E41-55 (Optional)

2



3



4-6



7



8



9



10-11



12 (Optional)



13 (Optional)

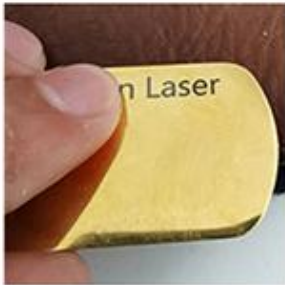


14 (Optional)



MARKING EFFECT DISPLAY





h

APPLICABLE MATERIAL

MATERIALS	LASER CUTTING	LASER MARKING & ENGRAVING
ACRYLIC		✓
PLASTICS		✓
BRICK		✓
GLASS		✓
MARBLE		✓
TILE		✓
ALUMINUM	✓	✓
COPPER	✓	✓
SILVER	✓	✓
GOLD		✓
BRASS		✓
TITANIUM	✓	✓
STEEL	✓	✓