



Portable Handheld Laser Marking Machine

SFX-20GS/30GS/50GS

✓ EASY TO CARRY

✓ ONE-CLICK FOR MARKING

✓ IT CAN BE OPERATED OUTDOORS



Small and lightweight

Flexible and portable



Whole machine weight 6.8-8.8KG (Battery included)
Gun head weight **1KG**





Dual power supply system optional

110V/220V Plug-in Version: Just plug in for work, convenient and fast

Rechargeable lithium battery version: with removable battery

Charging method: charging separately or charge with the whole machine



Red-light pointer

High precision marking

Max laser source

Achieve fast focusing and high-precision marking





8" color touch screen

simple and easy-to-learn interface, multiple formats for editing
One-key trigger, simple and smooth

Multiple language modes are available: English, Japanese, Korean, Russian, Arabic, etc.



Various styles

Various materials



Metal materials: gold, silver, copper, steel etc.

Non-metallic materials: paper/plastic/leather etc.



Copper



Aluminum



Steel



Electronics/
aviation equipment



Paint surface
material



Leather

It has a wide range of applications, which can be used for personalized customization such as trademark coding and bar code marking.



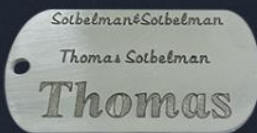
QR code



Bar code

**Pulsed laser
cleaning**

Text



Nameplate

20230819
16:24:59

Date



Pattern



Details reflect quality

Product details



01 Hidden field lens design

Reduce accidental touch, protective field lens



02 Hidden grille tunnels

Reduce wind noise, hide and protect hardware



03 Host handle

Made by nitrogen blow molding process, it can stand a force of up to 80kg



04 External USB interface

It can connect external USB for editing and marking



05 Stable four-corner bracket

It can be placed on a slope to fit the user's vision



06 Utility focal length spacers

Careful control of the focal length, overcome the problem of item size

SFX-20GS/30GS



SFX-50GS



Parameters Table

Laser output power	20/30W	50W
Marking range	70x70mm, 100x100mm (optional)	
Deflecting galvanometer	High-precision two-dimensional scanning system	
Laser wavelength	1064nm	
Marking speed/marketing line type	<7000mm/s	dot matrix and vector integrated machine
Master control	integrated motherboard, 8-inch capacitive full-fit screen	
Line width	0.03mm	
Repeat positioning accuracy	0.01mm	
Number of lines of characters that can be marked	any number of lines within the effective marking range	
Marking speed	800 characters (depend on material and marking content)	
Fonts	Standard Fonts of simplified Chinese, English, numbers, traditional Chinese etc.	
File formats	BMP、 DXF、 HPGL、 JPEG、 PLT	
Bar code	CODE39、 CODE128、 CODE126. QR	
Power supply	110V/220VAC. Lithium battery (216wh)	110V/220VAC. Lithium battery (324wh)
Power consumption	145-250W	
Working temperature	0-40°	
Weight	6-6.8KG	8-8.8KG